

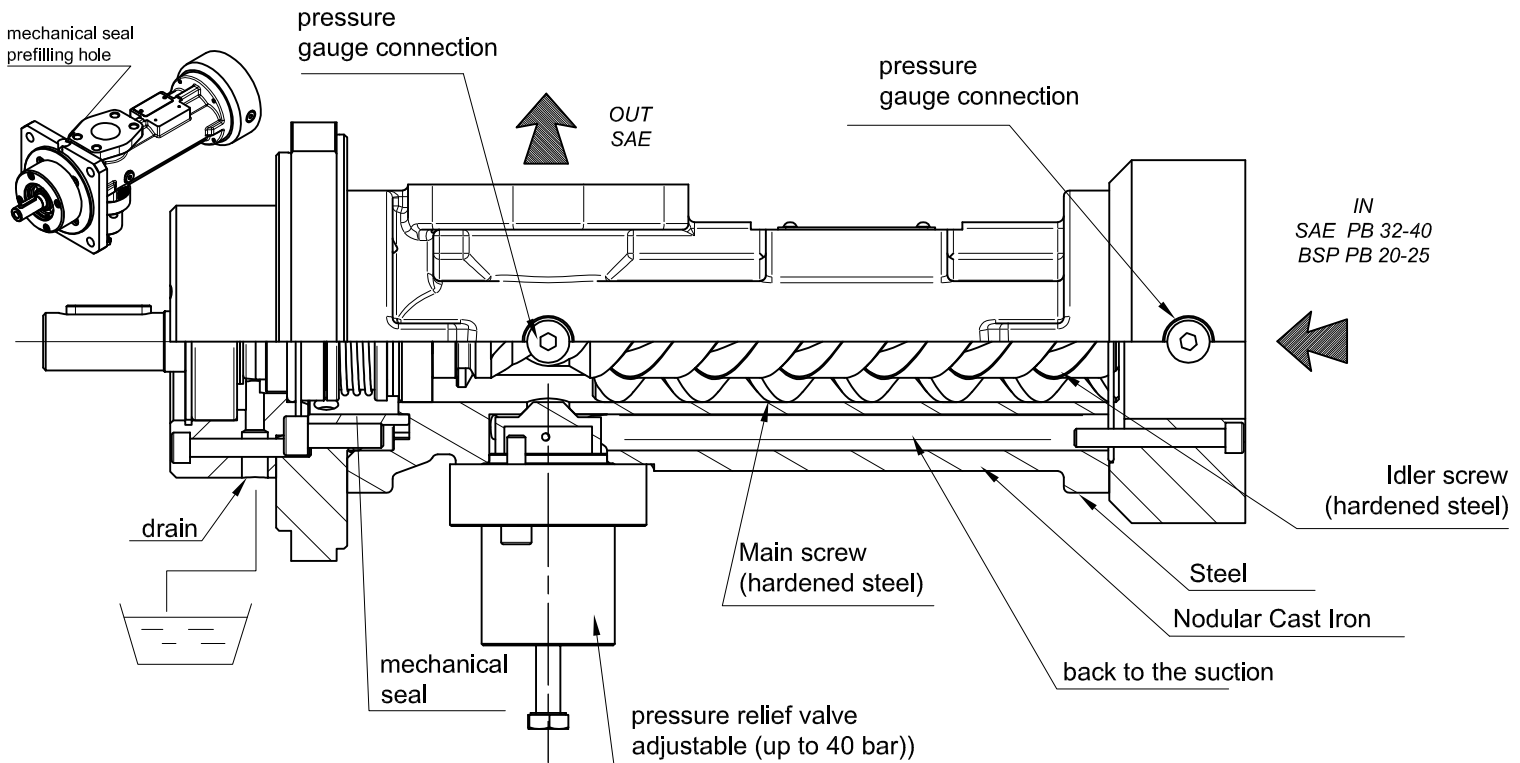
# Screw pumps - PB series

For hydraulic oils, lubricating oils, HFO, FO, DO, GO, ULSD, LSMGO.  
Admissible delivery pressure (continuous) up to 40 bar (580 psi)



## Main field of application

Pumps for lubrication systems and auxiliary cooling, with relief valve.  
Fuel supply line (feeder and circulation), transfer and cargo.  
Version with magnetic coupling.



Approved

Available on demand



CERTIFICATION



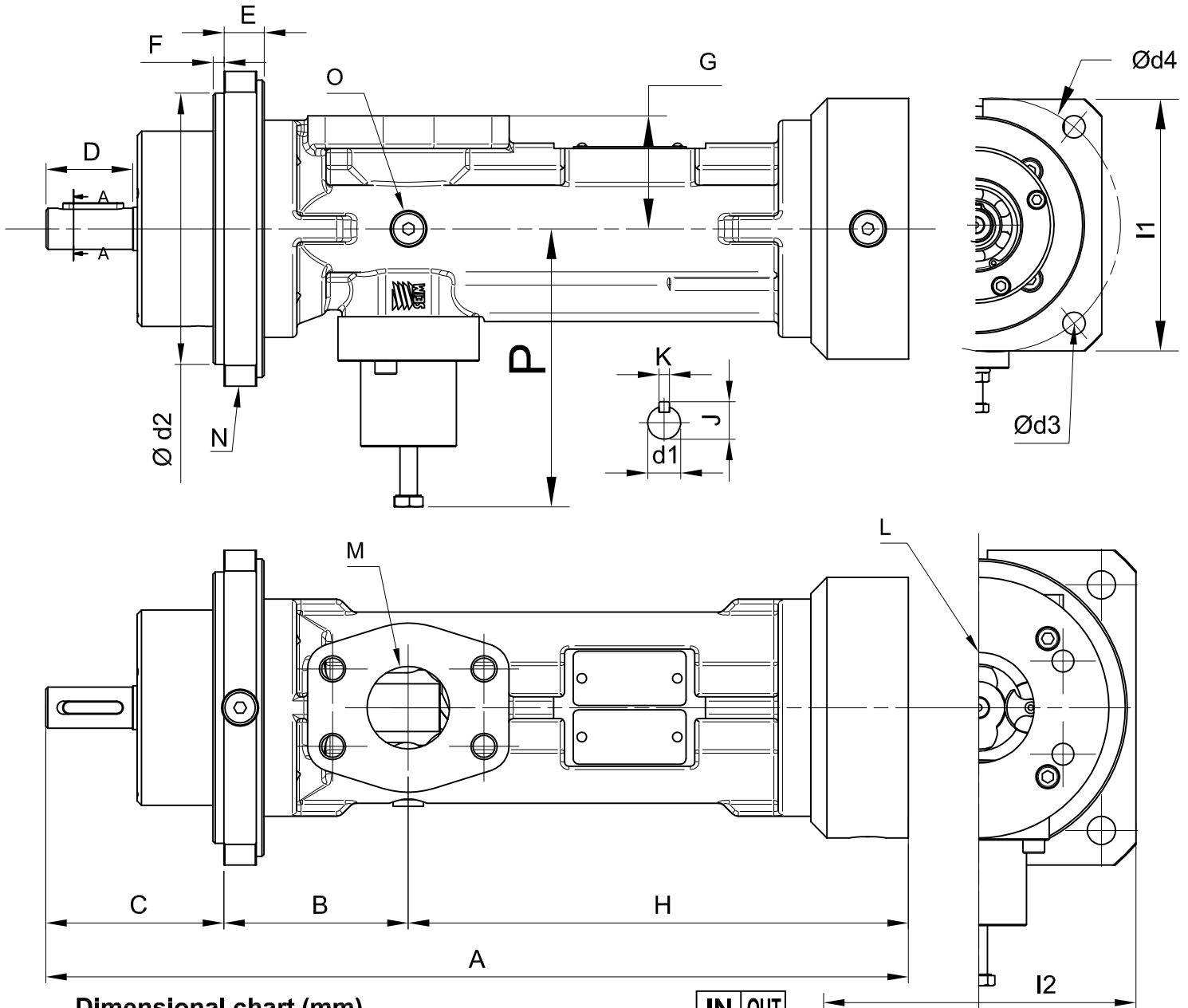
## Functional characteristics standard version

<b>Delivery flow</b>	up to 200 l/min (up to 52 USGPM)	
<b>Admissible delivery pressure *</b>	up to 40 bar (580 psi) from 1000 to 3600 rpm	
<b>Valve setting</b>	up to 40 bar (580 psi)	
<b>Admissible suction pressure</b>	from -0,7 to 10 bar (from -10 to 145 psi)	For different values contact SEIM
<b>Kinematics viscosity</b>	from 1,2 to 400 cSt STD (< 5000 cSt special)	For different values contact SEIM
<b>Admissible temperature</b>	from 0 to 150 °C (32 a 302 °F)	For different values contact SEIM
<b>Driving speed</b>	from 1000 to 3600 rpm	
<b>Average noise level</b>	60 - 75 dB(A) at 3600 rpm according to pump dimension	
<b>Suction strainer</b>	See Appendix - table 1	
<b>Raccomended fluid cleanliness level in the system</b>	See Appendix - table 2 - ISO 16889 $B_{x>1000}$	
<b>Direction of rotation</b>	Clockwise, as seen from the driving side	

\* Reduced pressure limits apply due to fluid viscosity and driving speed  
Consult the performance charts for the individual pump size  
For different functional characteristics, please contact our sales department

# Screw pumps - PB series

For hydraulic oils, lubricating oils, HFO, FO, DO, GO, ULSD, LSMGO.  
Admissible delivery pressure (continuous) up to 40 bar (580 psi)



Dimensional chart (mm)

MODELLO	A	B	C	D	E	F	G	H	I1	I2	J	K	IN OUT		N	O	P	d1 Ø	d2 Ø	d3 Ø	d4 Ø
													L	M							
PB020-25	276	65	67	29	16.5	5	45	144	116	111	16	5	1" BSP	1"	1/8"	1/8"	93	14	100	11	125
PB020-25*	276	65	67	29	16.5	5	45	144	116	111	16	5	1" SAE	1"	1/8"	1/8"	93	14	100	11	125
PB032	372	88	82	40	18.5	5	52	211.5	145	145	21.5	6	2" SAE	1 1/2"	1/8"	1/8"	108	19	125	13	160
PB040	398	85	82	40	18.5	5	52	230.5	145	145	21.5	6	2" SAE	1 1/2"	1/8"	1/8"	128	19	125	13	160

\* Optional SAE Flangia Aspirazione

SEIM srl  
Via A. Volta 17  
20090 Cusago (MI) ITALY  
Tel. (+39) 02.90.39.21.1  
Fax. (+39) 02.90.39.21.41  
e-mail: seim@seim.it

[www.seim.it](http://www.seim.it)

SEIM reserves the right to introduce dimensional changes or variation to the products of this technical data

# Screw pumps - PB series

For hydraulic oils, lubricating oils, HFO, FO, DO, GO, ULSD, LSMGO.  
Admissible delivery pressure (continuous) up to 40 bar (580 psi)



## Appendix

VISCOSITY	MESH STRAINER
< 5 cSt	60 mesh
< 10 cSt	40 mesh
< 20 cSt	20 mesh
< 200 cSt	Perforation 1/8"
< 500 cSt	Perforation 3/16"
> 500 cSt	Perforation 1/4"

Table 1

	bar	1450 rpm				2900 rpm				3600 rpm			
		10	16	25	40	10	16	25	40	10	16	25	40
PB20	Bx>1000	15 um								25 um			
PB 25	Bx>1000	15 um											
PB 32	Bx>1000	15 um											
PB 40	Bx>1000	25 um											

Fluid > 5 cSt

	bar	1450 rpm				2900 rpm				3600 rpm			
		10	16	25	40	10	16	25	40	10	16	25	40
PB 20	Bx>1000	Contact Seim								10 um			
PB 25	Bx>1000	Contact Seim								10 um			
PB 32	Bx>1000	Contact Seim								10 um			
PB 40	Bx>1000	Contact Seim								15 um			

Fluid < 5 cSt

Table 2

SEIM srl  
Via A. Volta 17  
20090 Cusago (MI) ITALY  
Tel. (+39) 02.90.39.21.1  
Fax. (+39) 02.90.39.21.41  
e-mail: [seim@seim.it](mailto:seim@seim.it)

[www.seim.it](http://www.seim.it)

SEIM reserves the right to introduce dimensional changes or variation to the products of this technical data