

Screw pumps - PHS series

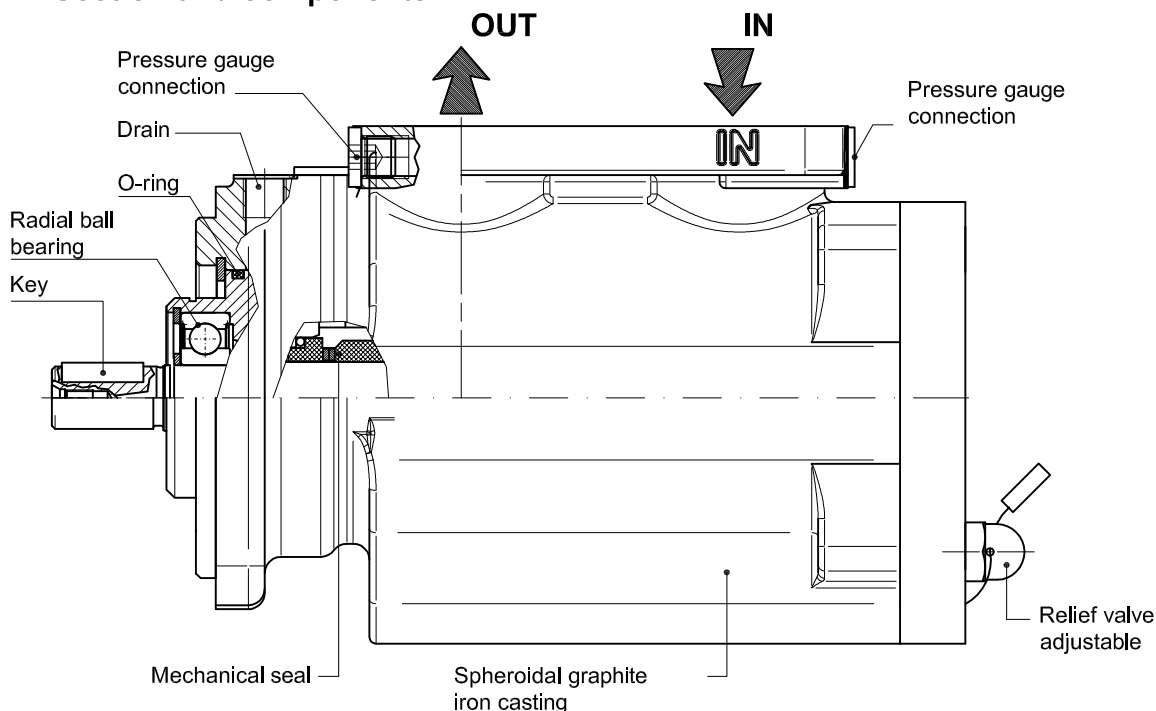
For hydraulic oils, lubricating oils, HFO, FO, DO, GO, ULSD, LSMGO.
 Admissible delivery pressure (continuous) = 16 bar from 1000 to 3600 rpm



Main field of application

Pumps for lubrication systems and auxiliary cooling, with relief valve.
 Fuel supply line (feeder and circulation), transfer and cargo.
 Version with magnetic coupling.

Section and components



Approved **Available on demand**

CERTIFICATION

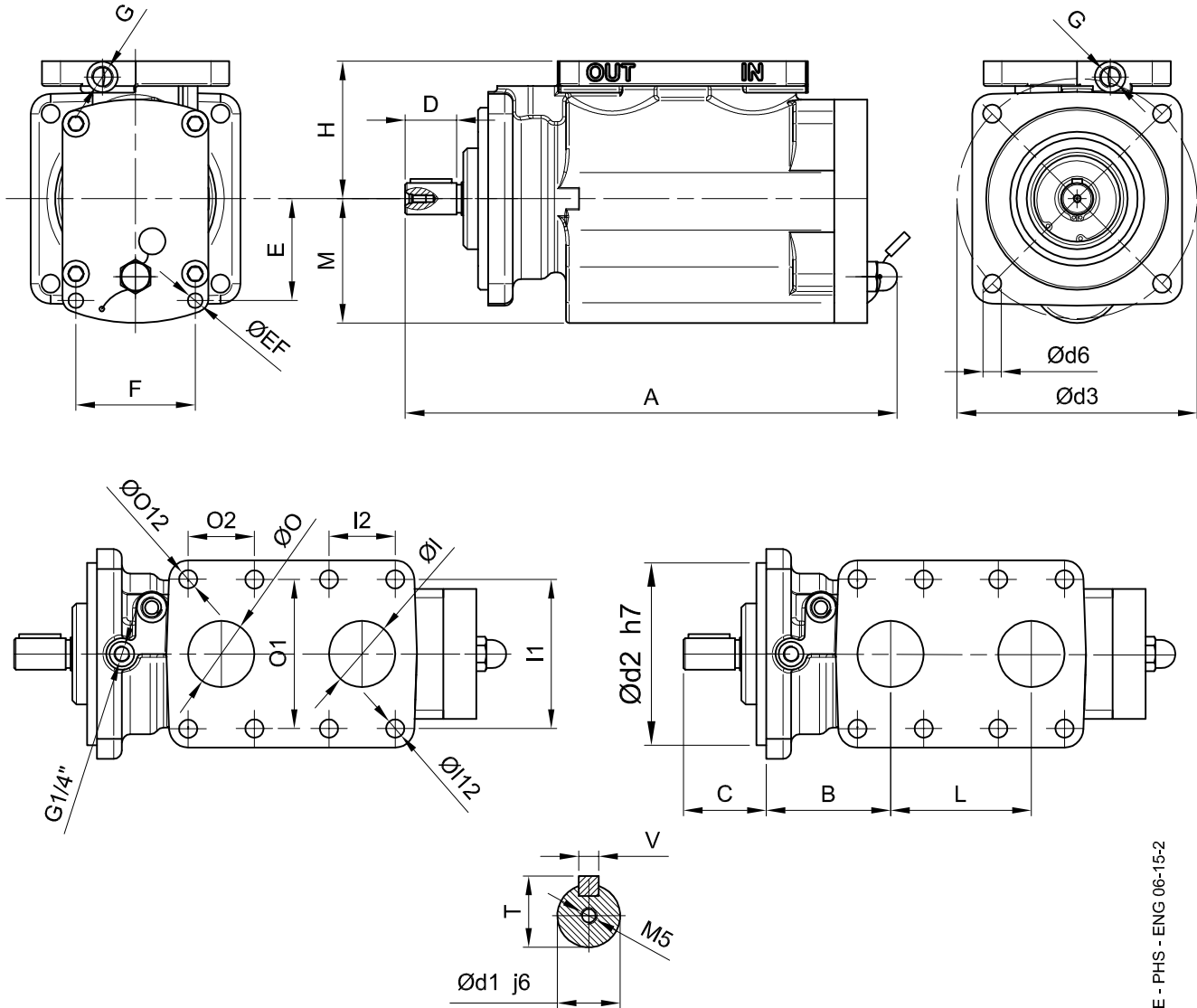
Functional characteristics standard version

Delivery flow	up to 170 l/min (up to 45 USGPM)
Admissible delivery pressure *	up to 16 bar (232 psi) from 1000 to 3600 rpm
Admissible suction pressure	from -0,7 to 10 bar (from -10 to 145 psi) For different values contact SEIM
Kinematics viscosity	from 1,2 to 400 cSt STD (< 5000 cSt special) For different values contact SEIM
Admissible temperature	from 0 to 150 °C (32 a 302 °F) For different values contact SEIM
Driving speed	from 1000 to 3600 rpm
Average noise level	60 - 75 dB(A) at 3600 rpm according to pump dimension
Recommened oil filtration	60 micron max (not abrasive contaminant) ISO 4406 19/16 - NAS 10
Direction of rotation	Clockwise, as seen from the driving side

* Reduced pressure limits apply due to fluid viscosity and driving speed
 Consult the performance charts for the individual pump size
 For different functional characteristics, please contact our sales department

Screw pumps - PHS series

For hydraulic oils, lubricating oils, HFO, FO, DO, GO, ULSD, LSMGO.
 Admissible delivery pressure (continuous) = 16 bar from 1000 to 3600 rpm



SD - STE - PHS - ENG 06-15-2

Dimensional chart (mm)

MODEL	A	B	C	D	E	F	EF Ø	G	H	L	M	T	V	d1 Ø	d2 Ø	d3 Ø	d6 Ø	IN			OUT				
																		I1	I2	I12 Ø	I Ø	O1	O2	O12 Ø	O Ø
PHS025	274	60	50	29	61,5	63,6	9	1/8"	73	60	68	16	5	14	110	130	9	62	28	9	25	62	28	9	25
PHS032	288	68	50	29	61,5	63,6	9	1/8"	73	75	68	16	5	14	110	130	9	90	40	11	40	62	28	9	25
PHS040	297	75	50	34	61,5	72	9	1/8"	83	85	75	21,5	6	19	120	145	11	90	40	11	40	90	40	11	40

SEIM srl
 Via A. Volta 17
 20090 Cusago (MI) ITALY
 Tel. (+39) 02.90.39.21.1
 Fax. (+39) 02.90.39.21.41
 e-mail: seim@seim.it

www.seim.it

SEIM reserves the right to introduce dimensional changes or variation to the products of this technical data