

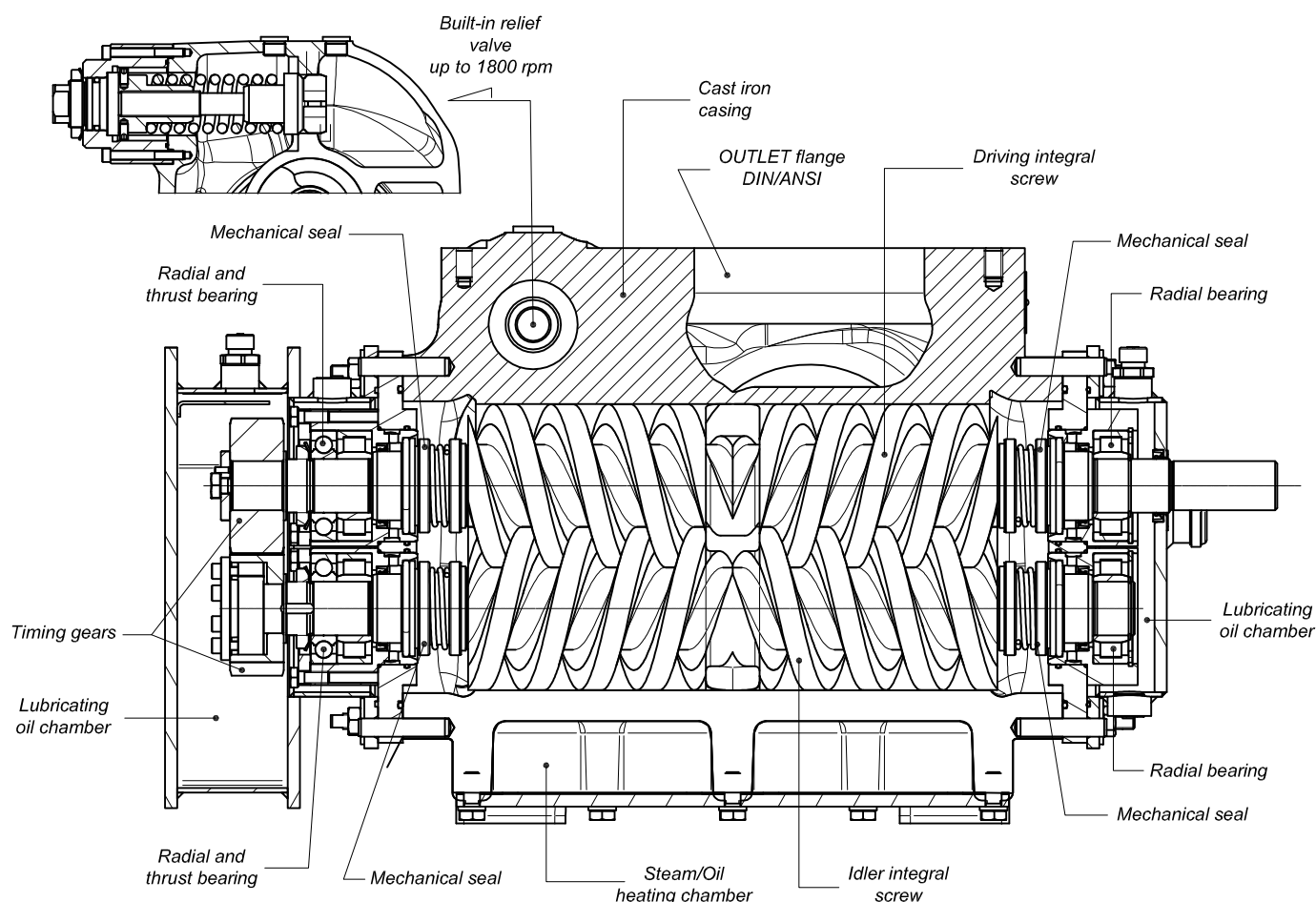
Screw pumps - 2SP series

Lubricating, non lubricating low and medium viscosity and corrosive fluids. Suitable for fresh water, light chemical and petrochemical products, fuel and heavy fuel oils. Admissible differential pressure (continuous) = 16 bar from 750 to 3600 rpm

Main field of application

Pumps for lubricating and non lubricating fluids with a wide range of viscosity.

Sectional drawing and main components



Functional characteristics standard version

| | |
|------------------------------------|---|
| Delivery flow | up to 19000 l/min (up to 5025 USGPM) |
| Admissible pressure * | up to 16 bar (232 psi) from 1000 to 3600 rpm |
| Admissible suction pressure | from -0,7 to 10 bar (from -10 to 145 psi) For different values contact SEIM |
| Kinematics viscosity | from 1 to 2500 cSt STD (1 - 5000 cSt special) For different values contact SEIM |
| Admissible temperature | from 0 to 150 °C (32 a 302 °F) For different values contact SEIM |
| Driving speed | from 1000 to 3600 rpm, according to pump dimension |
| Average noise level | 60 - 82 dB(A) at 3600 rpm, according to pump dimension |
| Direction of rotation | Clockwise, as seen from the driving side |

* Reduced pressure limits apply due to fluid viscosity and driving speed

Consult the performance charts for the individual pump size

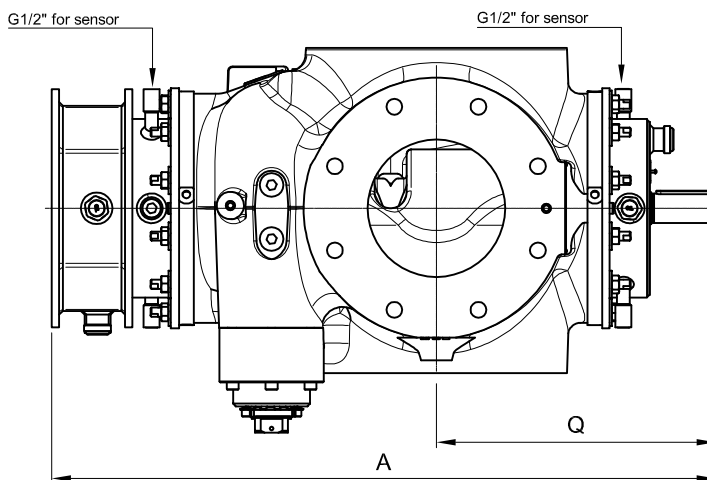
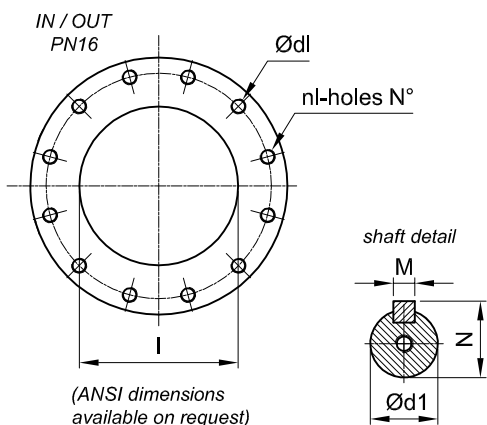
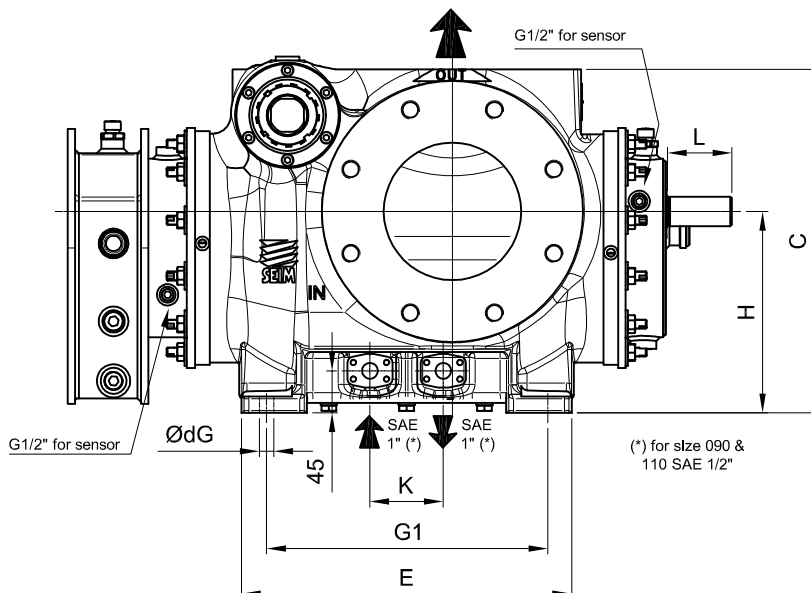
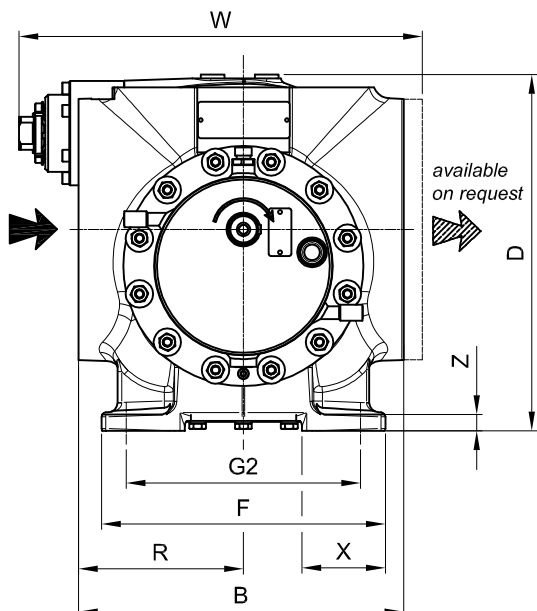
For different functional characteristics and materials, please contact our sales department

Screw pumps - 2SP series

HORIZONTAL

Lubricating, non lubricating low and medium viscosity and corrosive fluids. Suitable for fresh water, light chemical and petrochemical products, fuel and heavy fuel oils. Admissible differential pressure (continuous) = 16 bar from 750 to 3600 rpm

(1800 rpm for some sizes)



Dimensional chart (mm)

| MODEL | IN / OUT | | | | | | | | | | | | | | | | | | | | | | | |
|----------|----------|-----|-----|------|-----|-----|-----|-----|---------|-----|-----|-----|----|---------|------|-----|-----|-----|-----|-----|----|-----|---------|----|
| | A | B | C | D | E | F | G1 | G2 | dG Ø | H | K | L | M | d1 Ø | N | Q | R | W | X | Y | Z | I | dl Ø | nl |
| 2SP090** | 590 | 300 | 310 | 320 | 310 | 260 | 250 | 210 | 20 | 180 | 65 | 60 | 8 | 32 | 35 | 280 | 150 | 375 | 75 | 65 | 18 | 150 | M20 | 8 |
| 2SP110 | 725 | 355 | 375 | 389 | 360 | 310 | 300 | 250 | 20 | 220 | 80 | 70 | 8 | 32 | 35 | 305 | 180 | 445 | 91 | 71 | 18 | 150 | M20 | 8 |
| 2SP130 | 929 | 390 | 483 | 505 | 440 | 400 | 370 | 340 | 22 | 280 | 120 | 95 | 12 | 40 | 43 | 383 | 200 | 505 | 93 | 84 | 23 | 200 | M20 | 12 |
| 2SP170 | 1122 | 537 | 565 | 638 | 530 | 454 | 450 | 380 | 28 | 330 | 130 | 95 | 14 | 50 | 53.5 | 448 | 280 | 635 | 97 | 107 | 28 | 250 | M22 | 12 |
| 2SP210 | 1422 | 630 | 720 | 848 | 740 | 615 | 640 | 500 | 35 | 400 | 200 | 95 | 18 | 65 | 70 | 522 | 350 | 720 | 145 | 130 | 38 | 300 | M22 | 12 |
| 2SP270 | 1910 | 875 | 960 | 1130 | 985 | 820 | 855 | 660 | 40 | 535 | 250 | 110 | 22 | 80 | 85 | 695 | 470 | 950 | 180 | 165 | 45 | 400 | M27 | 16 |

(**) TBC in order phase

SEIM srl
Via A. Volta 17
20090 Cusago (MI) ITALY
Tel. (+39) 02.90.39.21.1
Fax. (+39) 02.90.39.21.41
e-mail: seim@seim.it

www.seim.it

SEIM reserves the right to introduce dimensional changes or variation to the products of this technical data