

Screw pump - PBE025

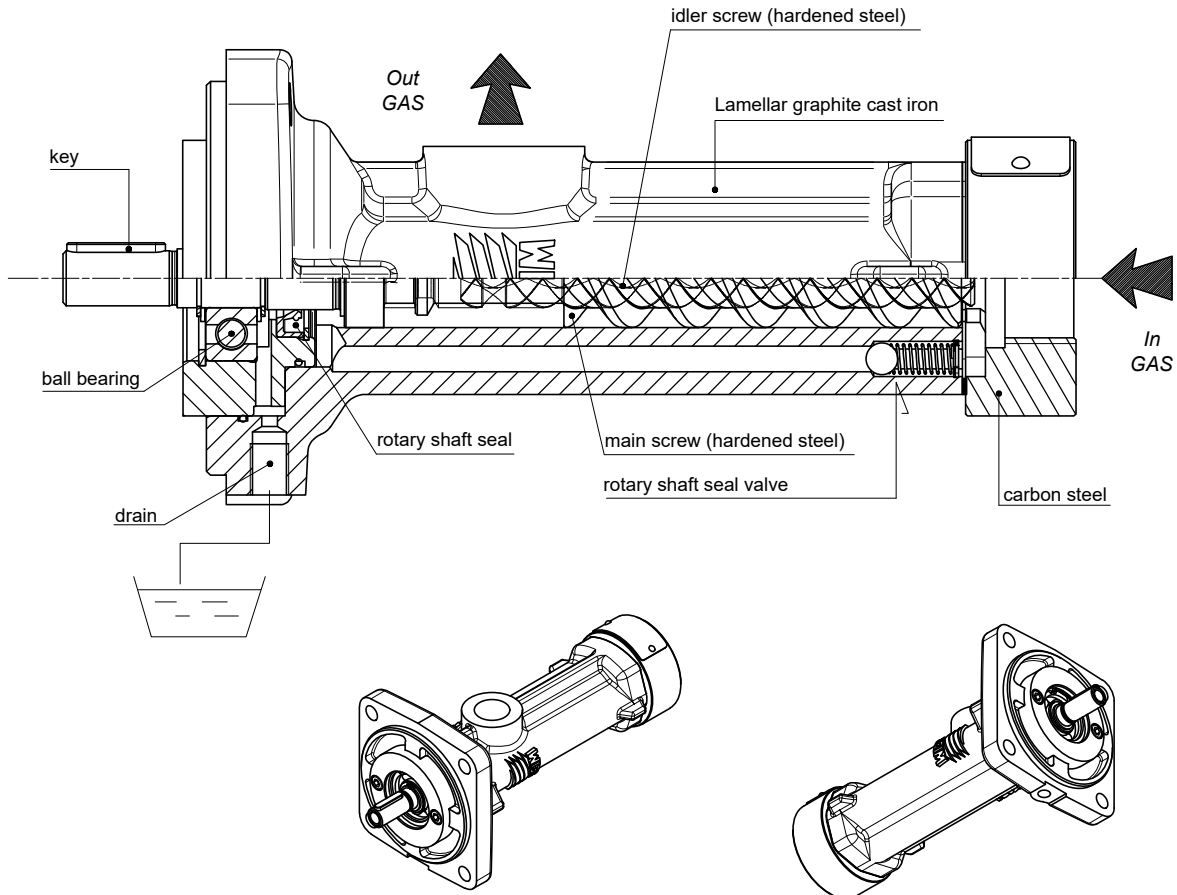
For hydraulic oils, lubricating oils, aqueous emulsions (oil min 4%).
Admissible delivery pressure (continuous) up to 30 bar (435 psi)



Main field of application

Industrial purpose, low pressure rated

Section and components



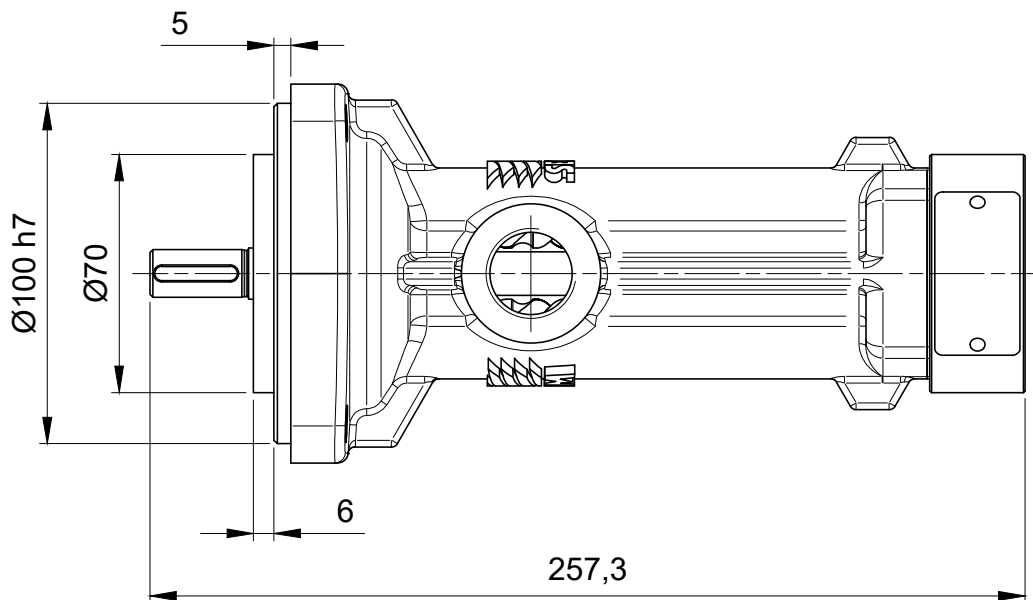
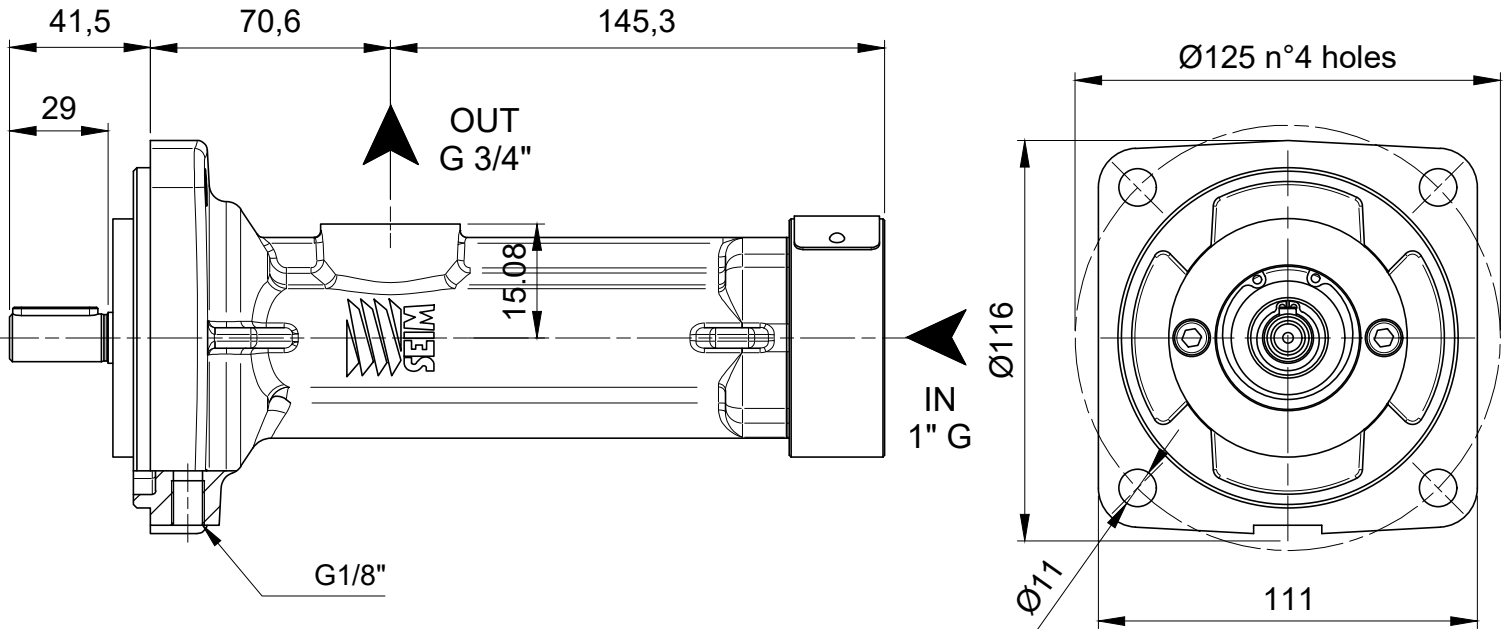
Functional characteristics standard version

Delivery flow	up to 42 l/min (up to 11 USGPM)
Admissible delivery pressure *	up to 30 bar (435 psi) from 500 to 3600 rpm
Admissible suction pressure *	from -0,1 to 0,5 bar (from -10 to 72,5 psi) For different values contact SEIM
Kinematics viscosity	from 1,2 to 1500 cSt STD (< 5000 cSt special) For different values contact SEIM
Admissible temperature	from 0 to 150 °C (32 a 302 °F) For different values contact SEIM
Driving speed	from 500 to 3600 rpm
Average noise level	60 - 75 dB(A) at 3600 rpm according to pump dimension
Suction strainer	See Appendix - table 1
Raccomended fluid cleanliness level in the system	See Appendix - table 2 - ISO 16889 $B_{X>1000}$
Direction of rotation	Clockwise, as seen from the driving side

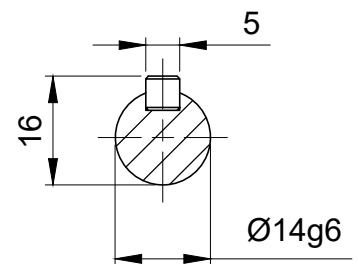
* Reduced pressure limits apply due to fluid viscosity and driving speed
Consult the performance charts for the individual pump size
For different functional characteristics, please contact our sales department

Screw pump - PBE025

For hydraulic oils, lubricating oils, aqueous emulsions (oil min 4%).
Admissible delivery pressure (continuous) up to 30 bar (435 psi)



SHAFT DETAIL



SEIM srl
Via A. Volta 17
20047 Cusago (MI) ITALY
Tel. (+39) 02.90.39.21.1
Fax. (+39) 02.90.39.21.41
e-mail: seim@seim.it

www.seim.it

SEIM reserves the right to introduce dimensional changes or variation to the products of this technical data

Screw pump - PBE025

For hydraulic oils, lubricating oils, aqueous emulsions (oil min 4%).
Admissible delivery pressure (continuous) up to 30 bar (435 psi)



Appendix

VISCOSITY	MESH STRAINER
< 5 cSt	60 mesh
< 10 cSt	40 mesh
< 20 cSt	20 mesh
< 200 cSt	Perforation 1/8"
< 500 cSt	Perforation 3/16"
> 500 cSt	Perforation 1/4"

Table 1

		1450 rpm				2900 rpm				3600 rpm			
bar		10	16	25	40	10	16	25	40	10	16	25	40
PB 25	Bx>1000	15 um											

Fluido > 5 cSt

		1450 rpm				2900 rpm				3600 rpm			
bar		10	16	25	40	10	16	25	40	10	16	25	40
PB 25	Bx>1000	Contatare Seim				10 um							

Fluido < 5 cSt

Table 2

SEIM srl
Via A. Volta 17
20047 Cusago (MI) ITALY
Tel. (+39) 02.90.39.21.1
Fax. (+39) 02.90.39.21.41
e-mail: seim@seim.it

www.seim.it

SEIM reserves the right to introduce dimensional changes or variation to the products of this technical data