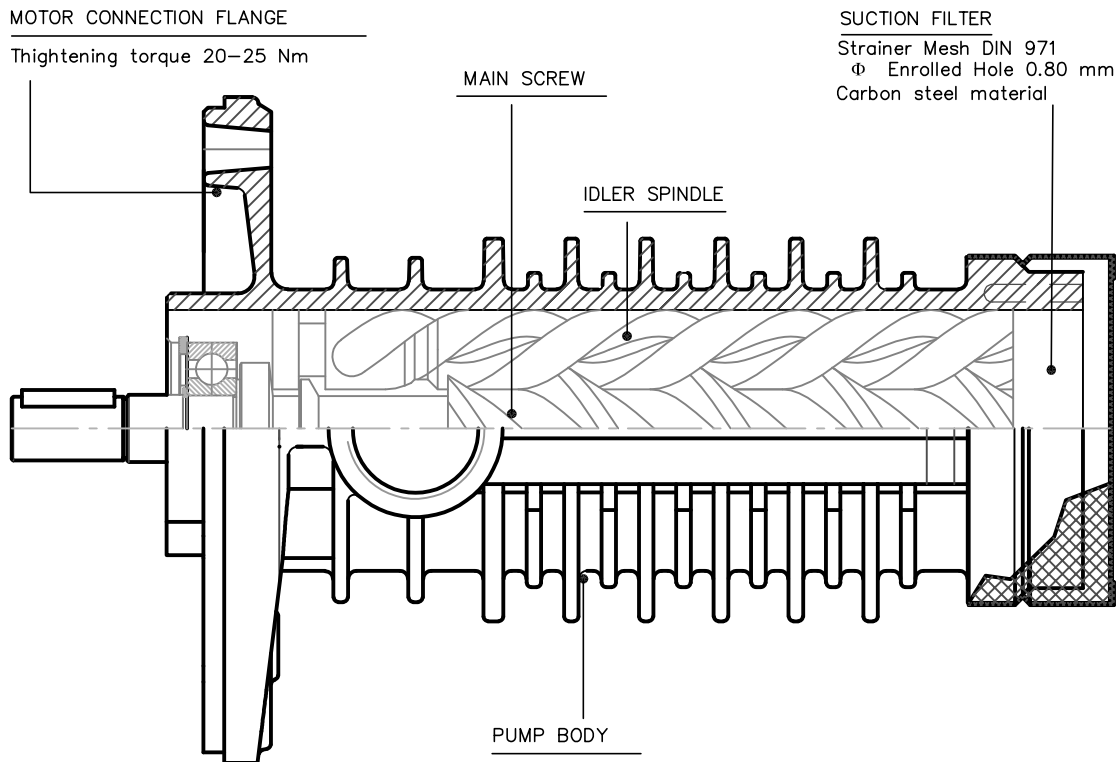


Screw pumps - PA standard Europe series



For hydraulic oils, lubricating oils.
 Admissible delivery pressure = 60 bar at 2900 rpm.

Main field of application:
 Oil submerged pump for hydraulic lift power packs



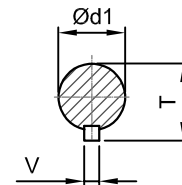
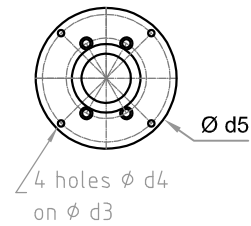
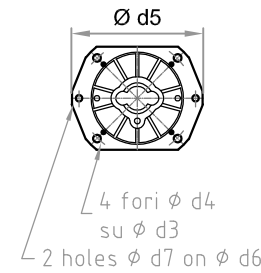
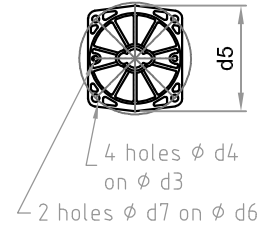
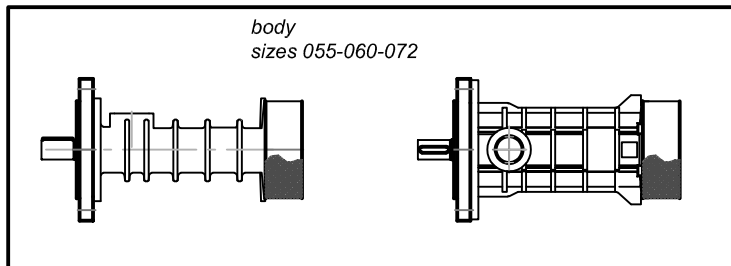
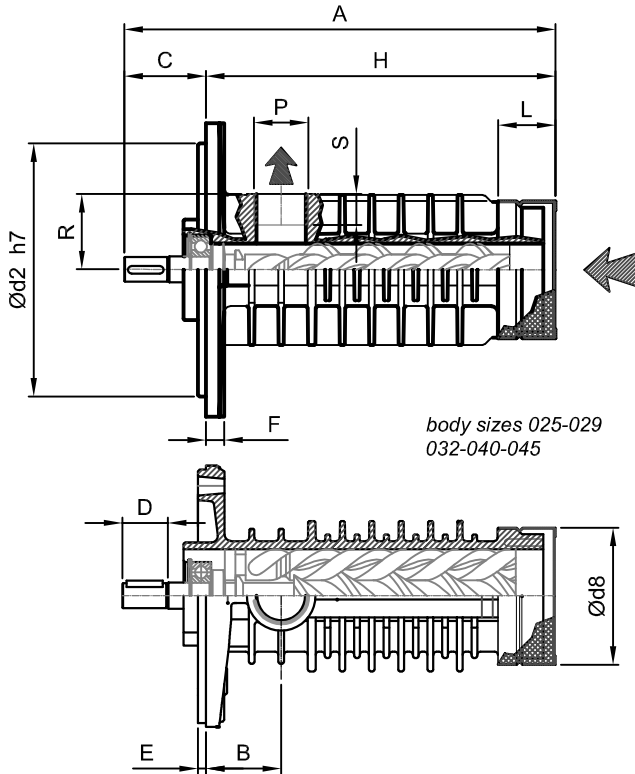
Functional characteristic standard version

Delivery flow	10 to 850 l/min (2,6 to 224 USGPM)
Admissible delivery pressure*	up to 60 bar (870 psi) continuos, 80 bar (1160 psi) peak at 2900 rpm
Admissible suction pressure	Submerged in oil
Kinematic viscosity	10 to 400 cSt For different values contact SEIM
Admissible temperature	0 to 100°C (32 to 212°F) For different values contact SEIM
Racomended Filtration	ISO 4406 CODE - 20/18/15 ---- NAS CODE - NAS10
Suction Strainer	Suction Strainer - Mesh as DIN 791 φ Enrolled Hole 0.80 mm
Driving speed	750 to 3600 rpm
Average noise level	58 - 68 dB(A) at 2900 rpm according to pump dimension
Direction of rotation	clockwise, as seen from the driving side

* Reduced pressure limit apply due to fluid viscosity and driving speed.
 Consult performance charts for the individual pump size.
 For different functional characteristics, please contact our sales department.

Screw pumps - PA standard Europe series

For hydraulic oils, lubricating oils.
Admissible delivery pressure = 80 bar at 2900 rpm.



PM - STE - PAE - ENG 03-22 - 6

Dimensional chart (mm)

MODEL	A	B	C	D	E	F	H	L	P	R	S	T	V	d1	d2	d3	d4	d5	d6	d7	d8
PA025#6.FM	270	46	65	35	5	8	205	35	1"	44	27,5	21,5	6	19	155	190	13	-			
PA029#6.FM	270	46	65	35	5	8	205	35	1"	44	27,5	21,5	6	19	155	190	13	-			84
PA032#4.FM	279	46	65	35	5	8	214	35	1"	47	27,5	21,5	6	19	155	190	13	-	135	9	
PAP040#4.FM	357	43,5	65	35	5	8	292	65	1"	53	27,5	21,5	6	19	155	190	13	-			124
PAP045#4.FM	373	50,5	81	57	5	8	292	65*	1 1/2"	53	28	35	10	32	155	190	14	220			124
PA055#4.FM	420	64	85	55	5	13	335	50	1 1/2"	60	28	35	10	32	155	190	13	220	195	11	162
PA060#4.FM	464	64	85	57	5	13	379	50	2"	60	28	35	10	32	155	190	13	220			162
PA072#4.FM	560	90	85	65	7	19	470	130	2"	72	30	35	10	32	220	260	16	-	-	-	190

* Also available with short filter

Ask pumps drawing for all dimensional details.

SEIM srl
Via A. Volta 17
20090 Cusago (MI) ITALY
Tel. (+39) 02.90.39.21.1
Fax. (+39) 02.90.39.21.41
e-mail: seim@seim.it

www.seim.it

SEIM reserves the right to introduce dimensional changes or variation to the products of this technical data.