

# SPB PUMPING STATION

Application: Heavy fuel, hydraulic or lubricating oils.

Admissible delivery pressure (continuous) = up to 40 bar from 1000 to 3600 giri/min.

## Main field of application

Power diesel engines or burners.

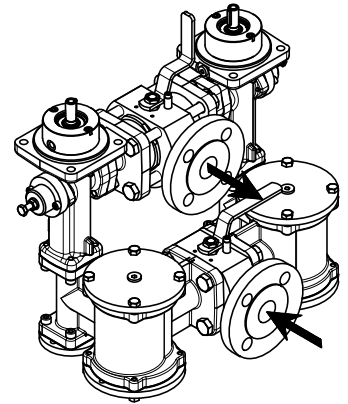
Lubrication systems and cooling.

Standard version: - relief valve on pumps

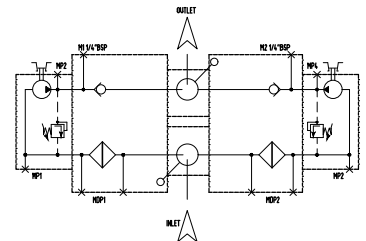
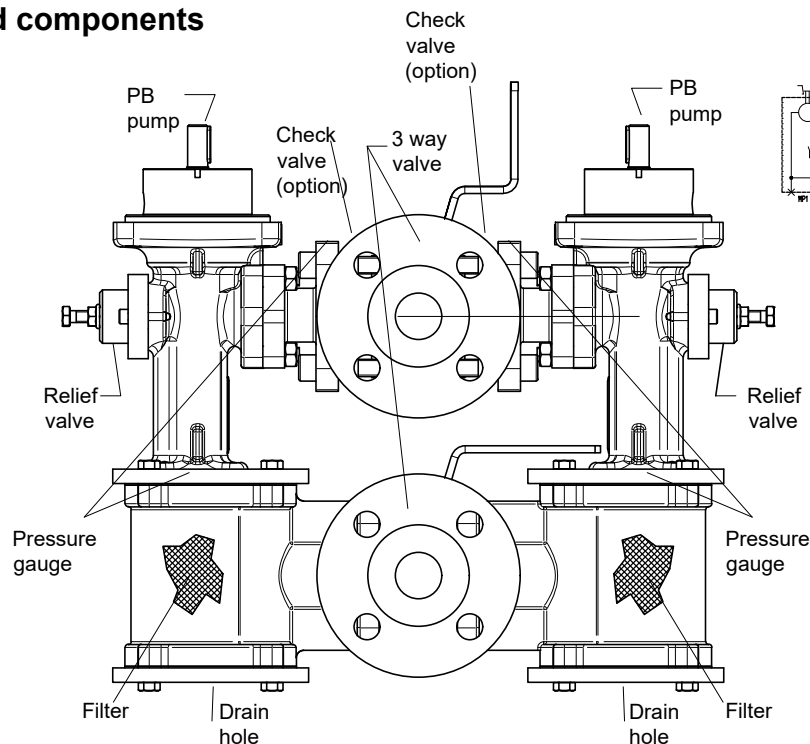
- shut-off valves in inlet and outlet

- spheroidal graphite iron GGG40

Special version: - with magnetic coupling



## Section and components



## Functional characteristics standard version

<b>Delivery flow</b>	up to 43 l/min (up to 11 USGPM)	
<b>Admissible delivery pressure *</b>	up to 40 bar (580 psi) from 1000 to 3600 giri/min	
<b>Admissible suction pressure</b>	from -0,7 to 10 bar (from -10 to 145 psi)	For different values contact SEIM
<b>Kinematics viscosity</b>	standard 1,2 - 1500 cSt	For different values contact SEIM
<b>Admissible temperature</b>	from 0 to 120 °C (32 a 248 °F)	For different values contact SEIM
<b>Driving speed (pump)</b>	from 1000 to 3600 giri/min	
<b>Average noise level</b>	60 - 75 dB(A) at 3600 giri/min according to pump dimension	
<b>Suction strainer</b>	See Appendix - table 1	
<b>Raccomended fluid cleanliness level in the system</b>	See Appendix - table 2	
<b>Direction of rotation</b>	clockwise, as seen from driving side	

\* Reduced pressure limits apply due to fluid viscosity and driving speed.

Consult the performance charts for the individual pump size.

*For different functional characteristics, please contact our sales department.*

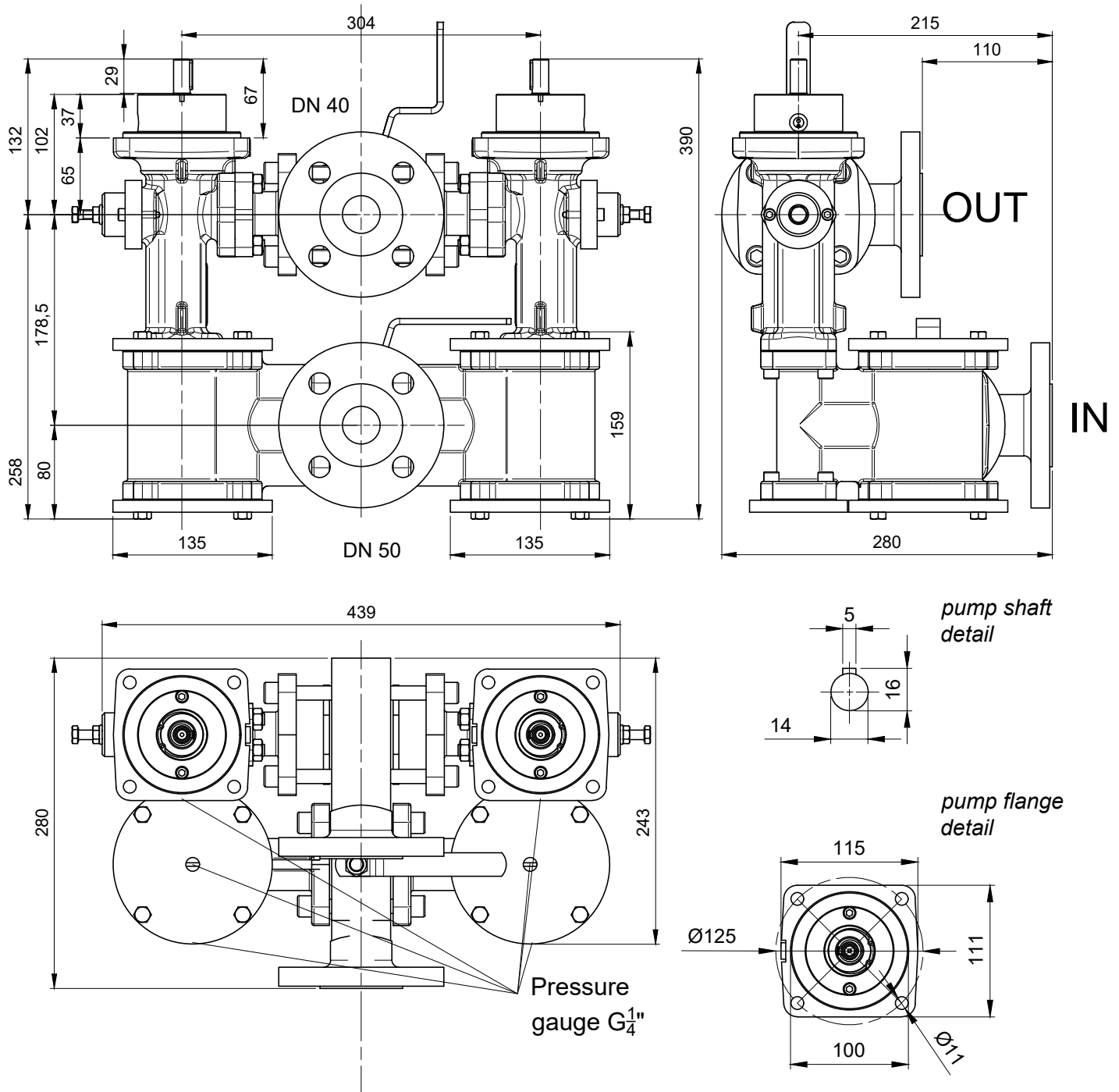
SD - STE - SPB - ENG-11-24 - 01

SEIM reserves the right to introduce dimensional changes or variation to the products of this technical data.

# SPB PUMPING STATION

Application: Heavy fuel, hydraulic or lubricating oils.

Admissible delivery pressure (continuous) = up to 40 bar from 1000 to 3600 giri/min.



SEIM srl  
Via A. Volta 17  
20090 Cusago (MI) ITALY  
Tel. (+39) 02.90.39.21.1  
Fax. (+39) 02.90.39.21.41  
e-mail: [seim@seim.it](mailto:seim@seim.it)

[www.seim.it](http://www.seim.it)

SD - STE - SPB - ENG-11-24 - 01

SEIM reserves the right to introduce dimensional changes or variation to the products of this technical data.

# SPB PUMPING STATION



Application: Heavy fuel, hydraulic or lubricating oils.

Admissible delivery pressure (continuous) = up to 40 bar from 1000 to 3600 giri/min.

## Appendix

VISCOSITY	MESH STRAINER
< 5 cSt	60 mesh
< 10 cSt	40 mesh
< 20 cSt	20 mesh
< 200 cSt	Perforation 1/8"
< 500 cSt	Perforation 3/16"
> 500 cSt	Perforation 1/4"

Table 1

	bar	1500				3000				3600			
		10	16	25	40	10	16	25	40	10	16	25	40
PB 20	B <sub>1000</sub>	15 um	15 um	15 um	15 um	15 um	15 um	15 um	15 um	15 um	15 um	15 um	15 um
PB 25	B <sub>1000</sub>	15 um	15 um	15 um	15 um	15 um	15 um	15 um	15 um	15 um	15 um	15 um	15 um

Fluid > 20 cSt

	bar	1500				3000				3600			
		10	16	25	40	10	16	25	40	10	16	25	40
PB 20	B <sub>1000</sub>	10 um	10 um	10 um	X	10 um	10 um	10 um	X	10 um	10 um	10 um	X
PB 25	B <sub>1000</sub>	10 um	10 um	10 um	X	10 um	10 um	10 um	X	10 um	10 um	10 um	X

Fluid < 20 cSt

Table 2

SEIM srl  
 Via A. Volta 17  
 20090 Cusago (MI) ITALY  
 Tel. (+39) 02.90.39.21.1  
 Fax. (+39) 02.90.39.21.41  
 e-mail: [seim@seim.it](mailto:seim@seim.it)

[www.seim.it](http://www.seim.it)

SD - STE - SPB - ENG-11-24 - 01

SEIM reserves the right to introduce dimensional changes or variation to the products of this technical data