

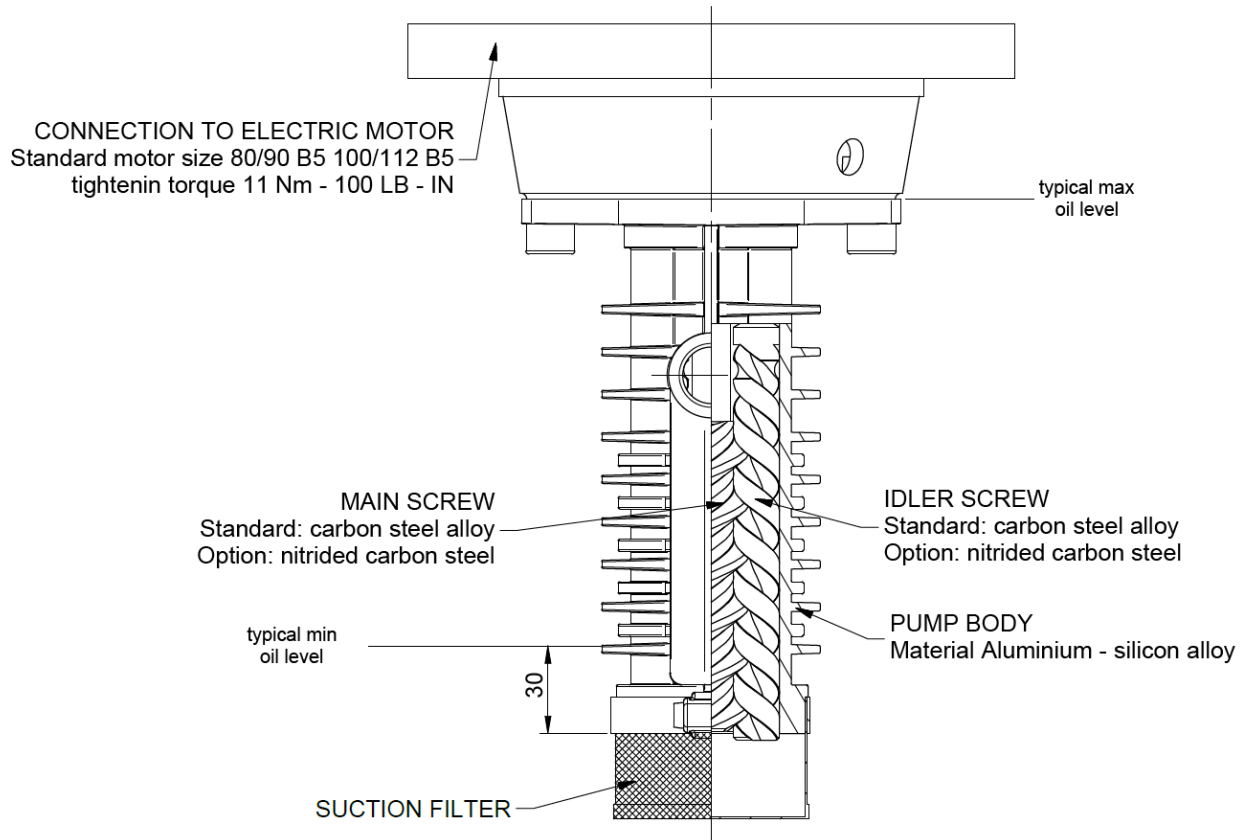
Screw pumps – PAVE series with bell housing



For hydraulic oils, lubricating oils
 Admissible delivery pressure = up to 75 bar at 2900 rpm

Main field of application:
 Oil submerged pump for hydraulic power packs

Section and components



Functional characteristics standard version

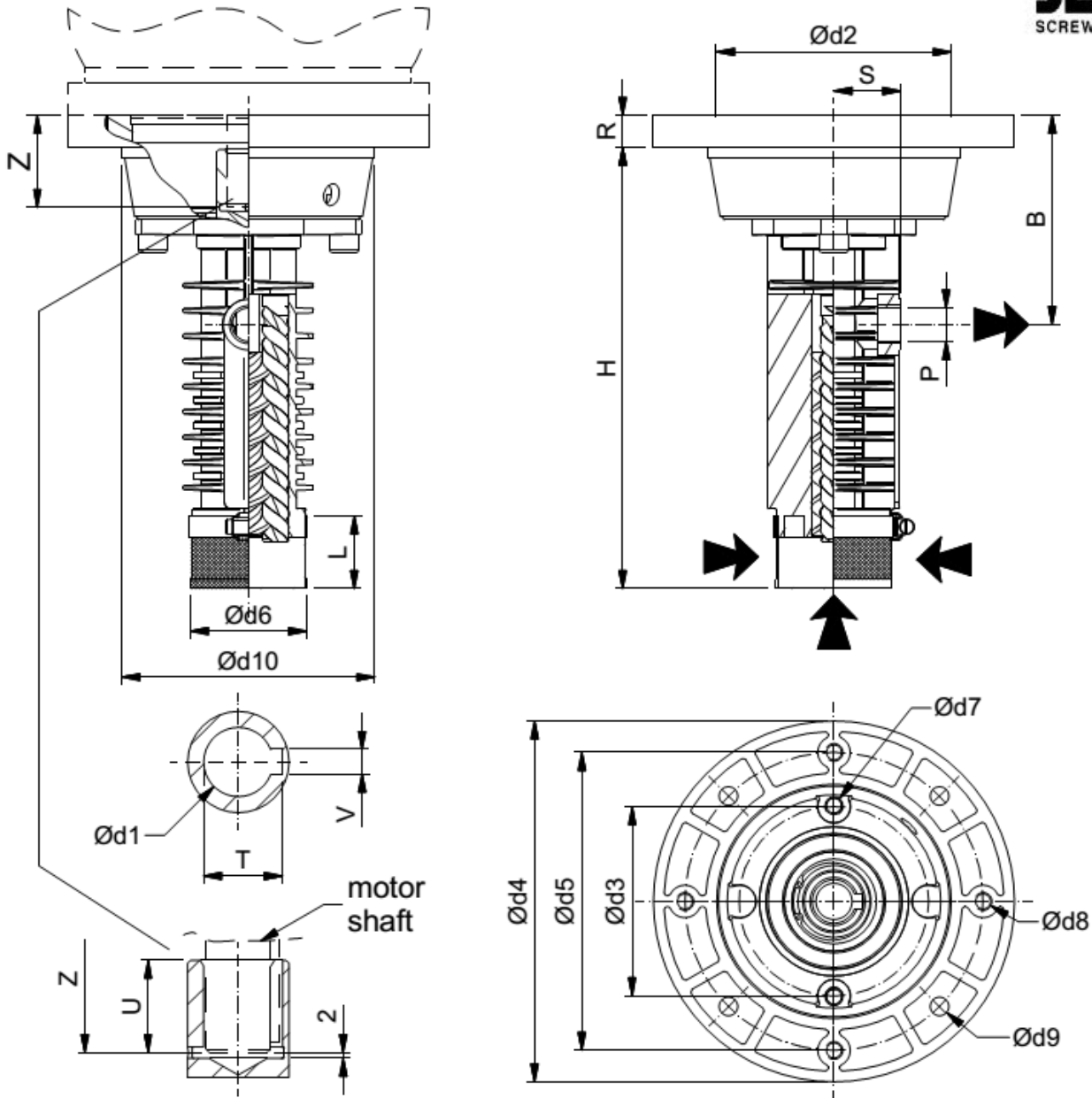
Delivery flow	3 to 75 lpm (0,8 to 20 USGPM)	
Admissible delivery pressure*	up to 75 bar (1087 psi) continuous, 120 bar (1740 psi) peak at 2900 rpm	
Admissible suction pressure	submerged in oil	
Kinematics viscosity	10 to 400 cSt	For different values contact SEIM
Admissible temperature	0 to 120 °C (32 to 248 °F)	For different values contact SEIM
Driving speed	750 to 3600 rpm	
Average noise level	56 dB(A) at 2900 rpm	
Recommended filtration	60 micron max, suction side (not abrasive contaminant) ISO4406 18 / 15 – NAS 9	
Direction of rotation	clockwise, as seen from the driving side	

* Reduced pressure limits apply due to fluid viscosity and driving speed
 Consult the performance charts for the individual pump size
 For different functional characteristics, please contact our sales department

Screw pumps – PAVE series with bell housing

For hydraulic oils, lubricating oils

Admissible delivery pressure = up to 75 bar at 2900 rpm



Dimensional chart (mm)

PUMP MODEL	MOTOR SIZE	B	H	L	P	R	S	T	V	U	Z	d1	d2	d3	d4	d5	d6	d7	d8	d9	d10	
PAVE020#4...	80/90	116	244	40	1/2"	18	37	21.8	6.5	22	40	19	130		200	165	65		M10	10,5	140	
PAVE025#4...	27.3							8.5	32	51	24											
PAVE025#6C...	100/112	113	256	35	1"	22	44	31.3	8	52.5	54	28	180	106	250	215	85	M10	M12	14	180	
PAVE029#6...			265																			47
PAVE032#4...																						

SEIM srl
 Via A. Volta 17
 20090 Cusago (MI) ITALY
 Tel. (+39) 02.90.39.21.1
 Fax (+39) 02.90.39.21.41
 e-mail: seim@seim.it

www.seim.it

SM - STE - PAVEL - GB - 01-15 - 4