

## Screw pumps - 2SP series

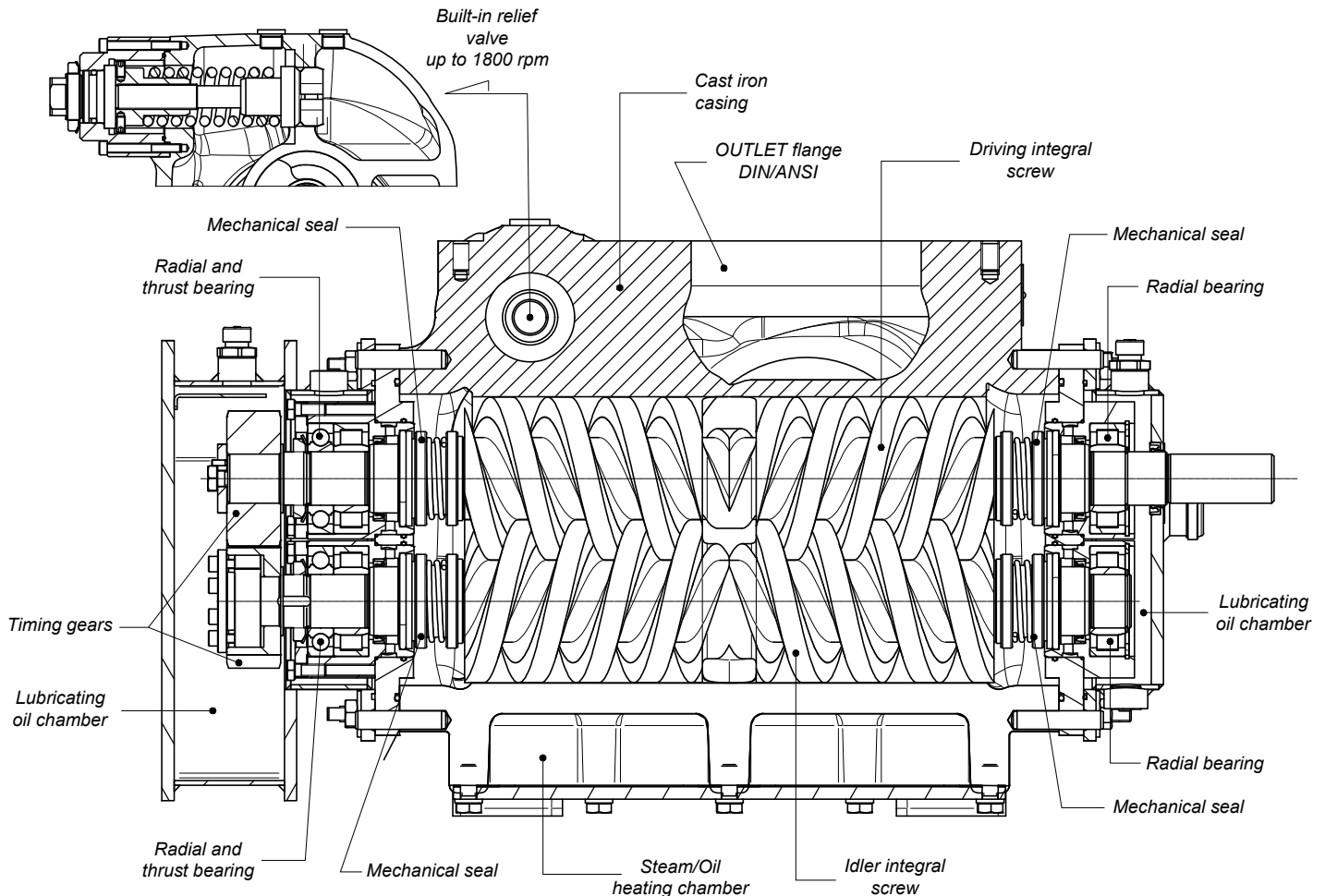
Lubricating, non lubricating low and medium viscosity and corrosive fluids. Suitable for light chemical and petrochemical products, fuel and heavy fuel oils.  
Admissible differential pressure (continuous) = 16 bar from 750 to 3600 rpm



### Main field of application

Pumps for lubricating and non lubricating fluids with a wide range of viscosity.

### Sectional drawing and main components



TD - STE - 2SP - ENG 03-25-04

### Functional characteristics standard version

<b>Delivery flow</b>	up to 19000 l/min (up to 5025 USGPM)
<b>Admissible pressure *</b>	up to 16 bar (232 psi) from 1000 to 3600 rpm
<b>Admissible suction pressure</b>	from -0,7 to 10 bar (from -10 to 145 psi) For different values contact SEIM
<b>Kinematics viscosity</b>	from 1 to 2500 cSt STD (1 - 5000 cSt special) For different values contact SEIM
<b>Admissible temperature</b>	from 0 to 150 °C (32 a 302 °F) For different values contact SEIM
<b>Driving speed</b>	from 1000 to 3600 rpm, according to pump dimension
<b>Average noise level</b>	60 - 82 dB(A) at 3600 rpm, according to pump dimension
<b>Direction of rotation</b>	Clockwise, as seen from the driving side
<b>Recommended fluid cleanliness level</b>	See Appendix Table 1

\* Reduced pressure limits apply due to fluid viscosity and driving speed

Consult the performance charts for the individual pump size

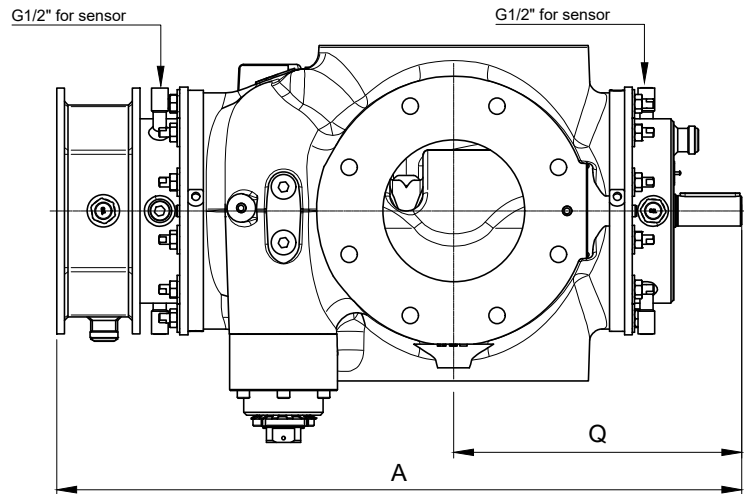
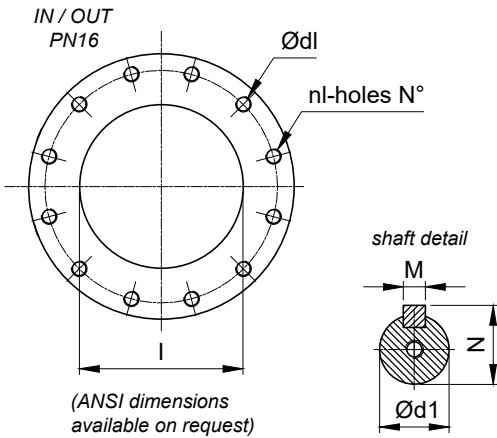
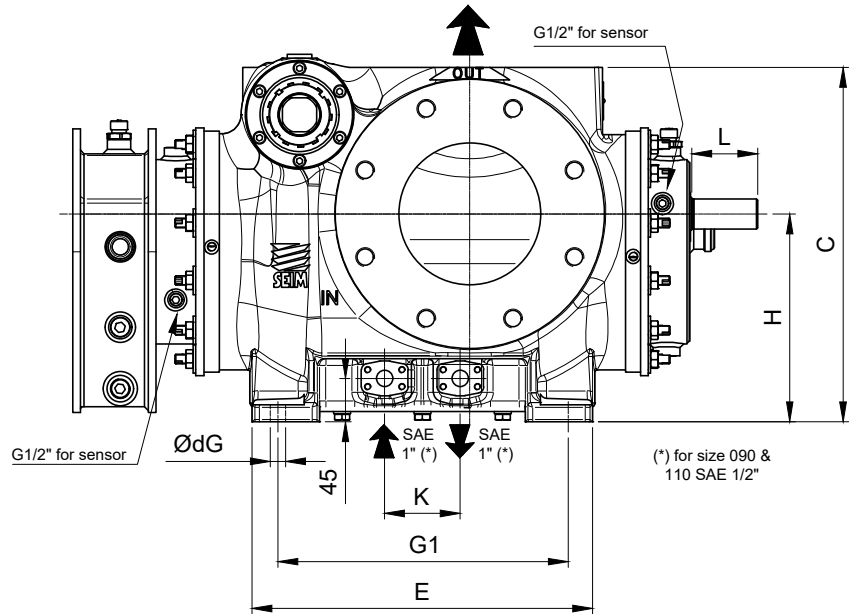
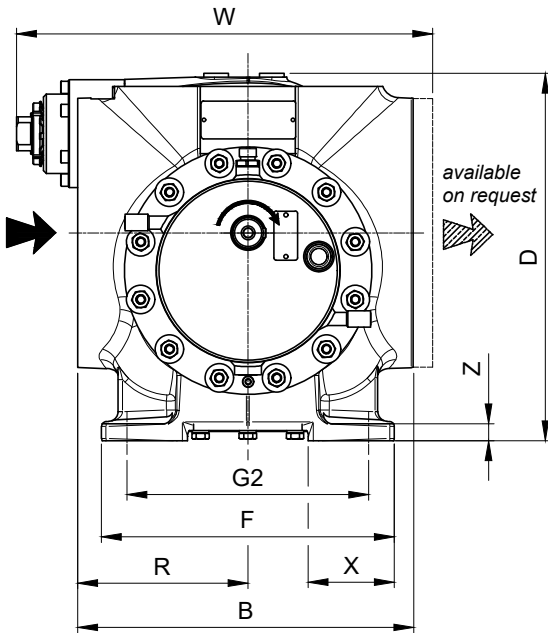
For different functional characteristics and materials, please contact our sales department

# Screw pumps - 2SP series

# HORIZONTAL

Lubricating, non lubricating low and medium viscosity and corrosive fluids. Suitable for light chemical and petrochemical products, fuel and heavy fuel oils.

Admissible differential pressure (continuous) = 16 bar from 750 to 3600 rpm  
(1800 rpm for some sizes)



## Dimensional chart (mm)

MODEL	IN / OUT																							
	A	B	C	D	E	F	G1	G2	dG	H	K	L	M	d1	N	Q	R	W	X	Y	Z	I	dI	nI
2SP090**	590	300	310	320	310	260	250	210	20	180	65	60	8	32	35	280	150	375	75	65	18	150	M20	8
2SP110	725	355	375	389	360	310	300	250	20	220	80	70	8	32	35	305	180	445	91	71	18	150	M20	8
2SP130	929	390	483	505	440	400	370	340	22	280	120	95	12	40	43	383	200	505	93	84	23	200	M20	12
2SP170	1122	537	565	638	530	454	450	380	28	330	130	95	14	50	53.5	448	280	635	97	107	28	250	M22	12
2SP210	1422	630	720	848	740	615	640	500	35	400	200	95	18	65	70	522	350	720	145	130	38	300	M22	12
2SP270	1910	875	960	1130	985	820	855	660	40	535	250	110	22	80	85	695	470	950	180	165	45	400	M27	16

SEIM srl  
Via A. Volta 17  
20047 Cusago (MI) ITALY  
Tel. (+39) 02.90.39.21.1  
Fax. (+39) 02.90.39.21.41  
e-mail: seim@seim.it

(\*\*) TBC in order phase

[www.seim.it](http://www.seim.it)

SEIM reserves the right to introduce dimensional changes or variation to the products of this technical data

## Screw pumps - 2SP series

## HORIZONTAL

Lubricating, non lubricating low and medium viscosity and corrosive fluids. Suitable for light chemical and petrochemical products, fuel and heavy fuel oils.

Admissible differential pressure (continuous) = 16 bar from 750 to 3600 rpm  
(1800 rpm for some sizes)



### Appendix

Size	Particle Fraction	Range (mm)	Description	Permissible Concentration (g/l) (Mohs 1-3)	Permissible Concentration (g/l) (Mohs 4-6)	Permissible Concentration (g/l) (Mohs 7-10)**	Example Materials
2SP 90-110-130-170-210	Ultra-fine	< 0.10	Extremely fine particles with very high specific surface area; high risk of abrasion and seal wear.	≤ 12	≤ 10	≤ 5	Clay, talc
2SP 90-110-130-170-210	Fine Powder	0.10 – 0.25	Particles in suspension; moderate abrasive risk; suitable for maintaining proper fluid rheology.	≤ 22	≤ 20	≤ 15	Amorphous powders, very fine silica
2SP 90-110-130-170-210	Very Fine Sand	0.25 – 0.4	Uniform, well-distributed particles (typically quartz) that flow easily through the pump's internal clearances.	≤ 45	≤ 35	≤ 30	Finely crushed quartz sand
2SP 130-170-210	Intermediate Sand	0.25 – 0.5	Slightly larger particles; abrasive risk increases compared to the previous fraction; limits are reduced to compensate for wear.	≤ 38	≤ 30	≤ 25	Mixed sand, finely crushed aggregates
2SP 210	Coarse Sand (Limited)	0.25 – 0.6	Particles up to 0.6 mm; higher abrasiveness and potential clogging require stricter limits to protect the pump.	≤ 28	≤ 20	≤ 15	Sands containing hard minerals (e.g., coarse quartz)
2SP 270	Medium Sand	0.25 – 1.0	Particles with a wider size distribution, including both very fine and larger fractions; higher abrasive risk requires more conservative limits.	≤ 20	≤ 15	≤ 10	Coarser quartz sand, recycled sand aggregates
						** Seal Face Width	

Table 1 - Recommended fluid cleanliness level