

Screw pumps PWO / PWE

For cooling lubricants with low viscosity and minimum lubricating properties (minimum oil: 4%) - lube oils, mineral and synthetic types

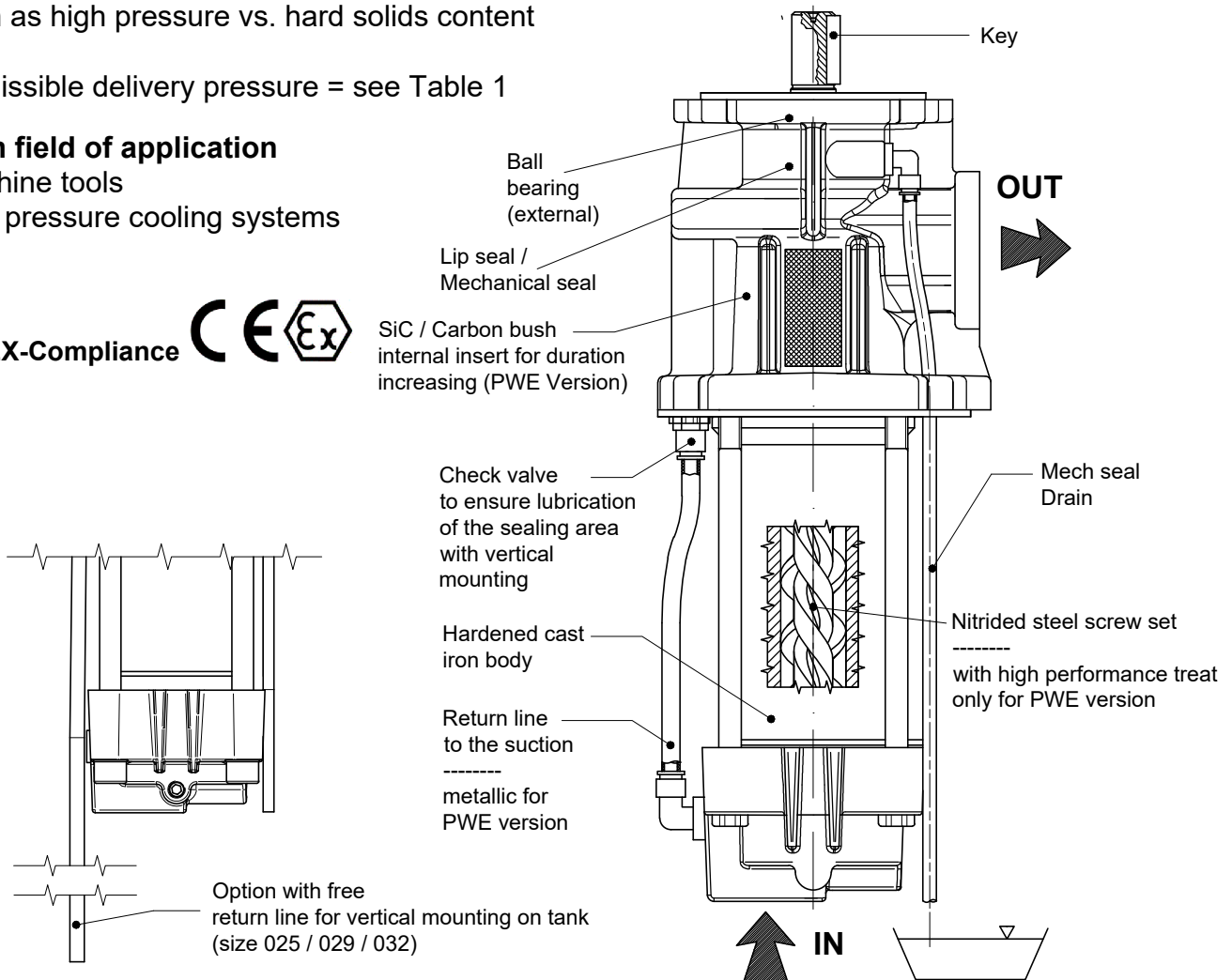


PWE version suitable for max lifecycle in hard conditions such as high pressure vs. hard solids content

Admissible delivery pressure = see Table 1

Main field of application

Machine tools
high pressure cooling systems



Functional characteristics standard version

| | |
|--|---|
| Delivery flow | up to 800 l/min (up to 211 USGPM) |
| Admissible delivery pressure * | up to 150 bar (2175,5 psi) - Table 1 * |
| Admissible suction pressure** | -0,5 to 10 bar (-7,3 to 145 psi) (with mechanical seal)*** 0 to 1 bar (0 to 14,5 psi) (with lip seal) |
| Kinematic viscosity | emulsion (min:4% oil) and cutting oils: 1 to 20 cSt contact SEIM for different viscosity or type of fluids |
| Admissible temperature | 0 to 100 °C (32 to 212 °F) |
| Driving speed | 2900 to 3500 rpm (contact SEIM for use with VFD) |
| Average noise level | 60 - 75 dB(A) at 2900 rpm according to pump dimension |
| Raccomended fluid cleanliness level in the system | see Appendix - Table 2 |
| Direction of rotation | clockwise, as seen from the driving side |

* Reduced pressure limits apply due to fluid viscosity and driving speed.

Consult the performance charts for the individual pump size.

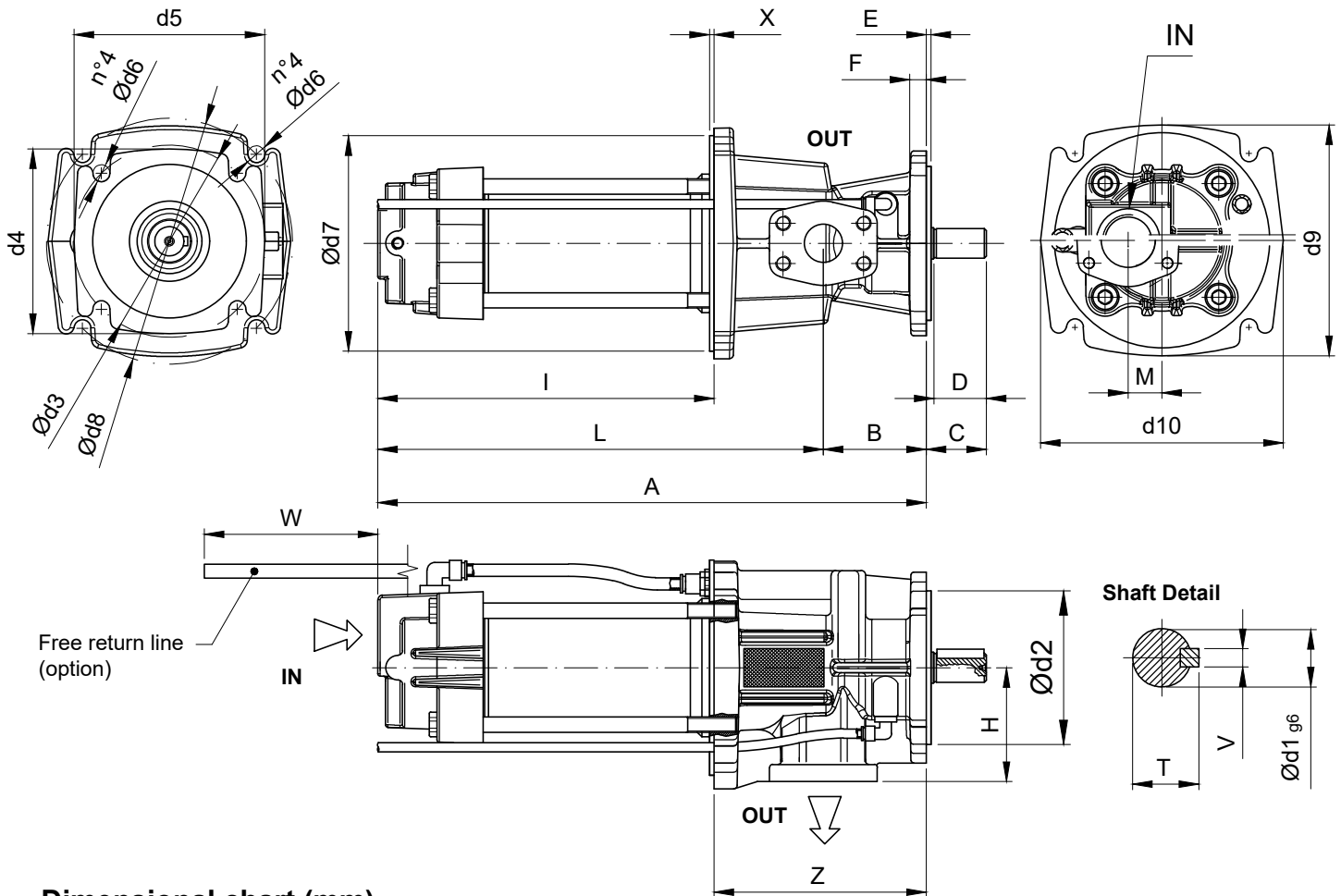
For different functional characteristics, please contact our sales department.

** For different values contact SEIM

*** From 0 up to max 1 bar if plastic external bypass tube. If it is metallic up to 10 bar.

Screw pumps PWO / PWE

For cooling lubricants with low viscosity and minimum lubricating properties (minimum oil: 4%) - lube oils, mineral and synthetic types



Dimensional chart (mm)

| MODEL | A | B | C | D | E | F | H | I | L | M | IN | OUT | T | V | d1 | d2 | d3 | d4 | d5 | d6 | d7 | X | d8 | d9 | d10 | Z | W |
|--------|-------------------------|-------|----|----|---|----|-----|-------|--------|----|------------|--------------------|------|----|----|-----|-----|-----|-----|----|-----|----|-----|-----|-----|-------|-----|
| PWO025 | 357 | 67 | 39 | 34 | 3 | 13 | 74 | 219 | 290 | 22 | 1" GAS | 1" SAE 3/4" GAS | 21,5 | 6 | 19 | 100 | 125 | 120 | 124 | 12 | 140 | 9 | 160 | 150 | 158 | 138 | 191 |
| PWO029 | 357 | 67 | 39 | 34 | 3 | 13 | 74 | 219 | 290 | 22 | 1" GAS | 1" SAE 3/4" GAS | 21,5 | 6 | 19 | 100 | 125 | 120 | 124 | 12 | 140 | 9 | 160 | 150 | 158 | 138 | 192 |
| PWO032 | 401 | 67 | 39 | 34 | 3 | 13 | 74 | 263 | 337 | 22 | 1" GAS | 1" SAE 3/4" GAS | 21,5 | 6 | 19 | 100 | 125 | 120 | 124 | 12 | 140 | 9 | 160 | 150 | 158 | 138 | 228 |
| PWO040 | 483.5 | 102 | 49 | 40 | 7 | 15 | 81 | 310.5 | 381.5 | 42 | 1 1/2" GAS | 1 1/2" SAE | 24.5 | 6 | 22 | 125 | 160 | 154 | 158 | 14 | 180 | 10 | 215 | 203 | 211 | 173 | - |
| PWO045 | 534 | 102 | 49 | 40 | 7 | 15 | 81 | 362 | 433 | 42 | 1 1/2" GAS | 1 1/2" SAE | 27 | 8 | 24 | 125 | 160 | 154 | 158 | 14 | 180 | 10 | 215 | 203 | 211 | 173 | - |
| PWO055 | 613 | 161.5 | 64 | 55 | 8 | 15 | 100 | 380 | 451 | 72 | 3" GAS | 2" SAE | 35 | 10 | 32 | 125 | 160 | 173 | 175 | 14 | 235 | 10 | 265 | 249 | 257 | 232.5 | - |
| | 391 | | | | | | | 462 | 3" SAE | | | | | | | | | | | | | | | | | | |
| PWO060 | 667 | 161.5 | 64 | 55 | 8 | 15 | 100 | 434 | 505 | 72 | 3" GAS | 2" SAE | 35 | 10 | 32 | 125 | 160 | 173 | 175 | 14 | 235 | 10 | 265 | 249 | 257 | 232.5 | - |
| | 679 | | | | | | | 446 | 517 | | 3" SAE | | | | | | | | | | | | | | | | |
| PWO072 | Dimensions on next page | | | | | | | | | | | | | | | | | | | | | | | | | | |
| PWO083 | Dimensions on next page | | | | | | | | | | | | | | | | | | | | | | | | | | |

SEIM srl
Via A. Volta 17
20047 Cusago (MI) ITALY
Tel. (+39) 02.90.39.21.1
Fax. (+39) 02.90.39.21.41
e-mail: seim@seim.it

www.seim.it

SEIM reserves the right to introduce dimensional changes or variation to the products of this technical data

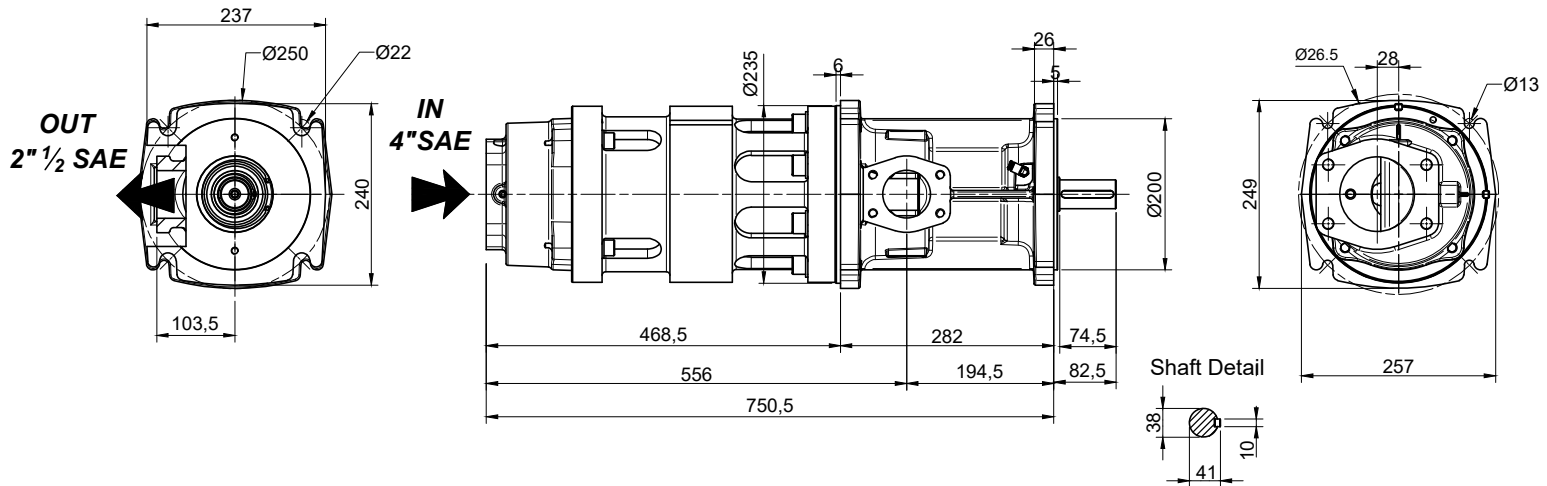
Screw pumps PWO / PWE

For cooling lubricants with low viscosity and minimum lubricating properties (minimum oil: 4%) - lube oils, mineral and synthetic types

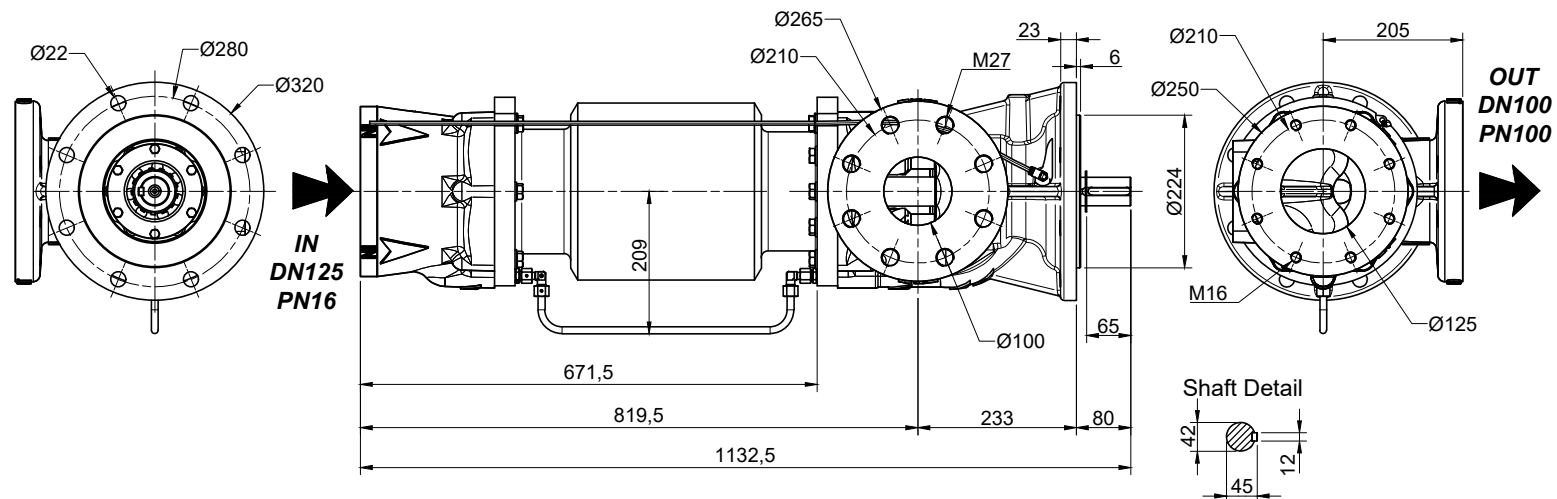


Dimensional lay out sizes 072 / 083 [mm]

Model PWO 072



Model PWO 083



SEIM srl
Via A. Volta 17
20047 Cusago (MI) ITALY
Tel. (+39) 02.90.39.21.1
Fax. (+39) 02.90.39.21.41
e-mail: seim@seim.it

www.seim.it

SEIM reserves the right to introduce dimensional changes or variation to the products of this technical data

Screw pumps PWO / PWE

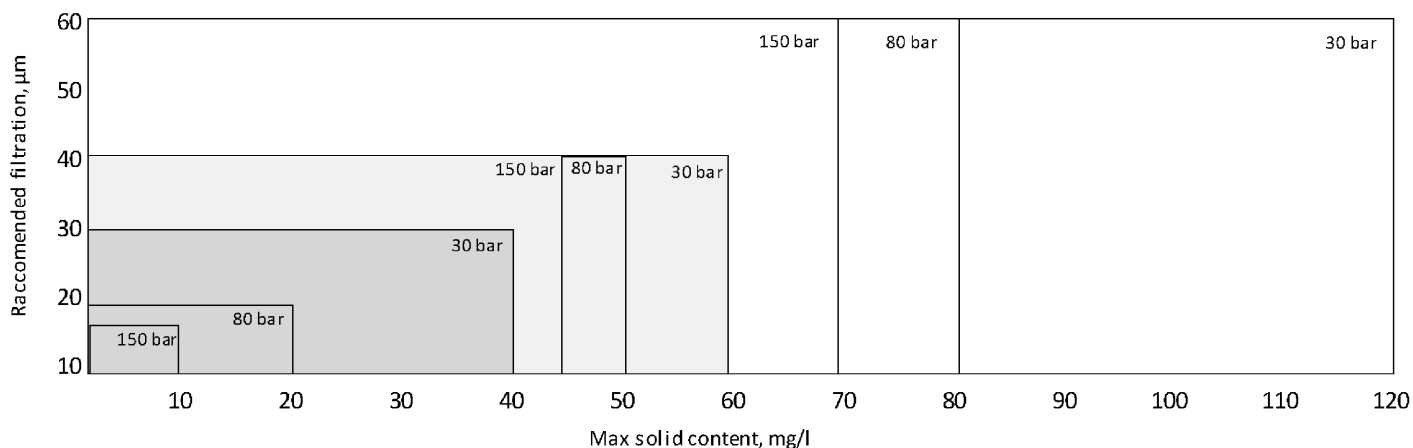
For cooling lubricants with low viscosity and minimum lubricating properties (minimum oil: 4%) - lube oils, mineral and synthetic types vegetables oils, biodiesel



Appendix

| | 1450 - 1750 rpm | | 2900 - 3500 rpm | |
|--------|-----------------|--------|-----------------|--------|
| | 1 cSt | 20 cSt | 1 cSt | 20 cSt |
| PWO025 | Contattare SEIM | | 150 bar | |
| PWO029 | Contattare SEIM | | 150 bar | |
| PWO032 | Contattare SEIM | | 150 bar | |
| PWO040 | Contattare SEIM | | 120 bar | |
| PWO045 | Contattare SEIM | | 120 bar | |
| PWO055 | Contattare SEIM | | 120 bar | |
| PWO060 | Contattare SEIM | | 120 bar | |
| PWO072 | Contattare SEIM | | 100 bar | |
| PWO083 | Contattare SEIM | | 100 bar | |

Table 1 - Max delivery pressure (continuous) Vs Viscosity / Rpm



- Very -Hard Material 10000-1000 HV1
- Hard Material 1000 - 500 HV1
- Soft material < 500 HV1

Table 2

SEIM srl
Via A. Volta 17
20047 Cusago (MI) ITALY
Tel. (+39) 02.90.39.21.1
Fax. (+39) 02.90.39.21.41
e-mail: seim@seim.it

www.seim.it

SEIM reserves the right to introduce dimensional changes or variation to the products of this technical data